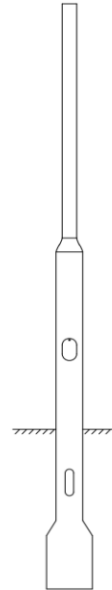


Lamp Post Catalog (MOQ 50 Units)



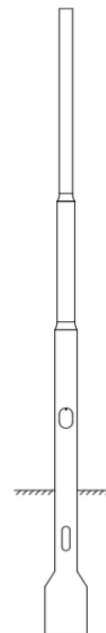
Top Shaft
TOP Diameter: 3"
BOTTOM Diameter: 5.5"
Thickness: 0.125"
Material: AL6063
With Base Plate, Access Door
Finish: Anodized



Top Shaft
TOP Diameter: 3"
BOTTOM Diameter: 5.5"
Thickness: 0.125"
Material: AL6063
Rooted, With Access Door
Finish: Anodized



Pole Shaft
Top Diameter: 3"
Middle Diameter: 4"
Bottom Diameter: 5"
Thickness: 0.125"
Material: AL6063
With Base Plate, access Door
Finish: Anodized



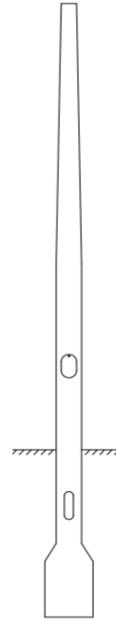
Pole Shaft
Top Diameter: 3"
Middle Diameter: 4"
Bottom Diameter: 5"
Thickness: 0.125"
Material: AL6063
Rooted, With access Door
Finish: Anodized

Looking for something that isn't here? Send us an email; we have a variety of options to suit your project needs.

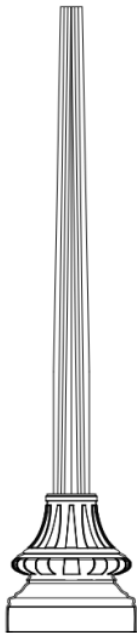
Lamp Post Catalog (MOQ 50 Units)



Top Shaft
 TOP Diameter: 3"
 BOTTOM Diameter: 5"
 Thickness: 0.125"
 Material: AL6063
 With Base Plate, Access Door
 Finish: Anodized



Top Shaft
 TOP Diameter: 3"
 BOTTOM Diameter: 5"
 Thickness: 0.125"
 Material: AL6063
 Rooted, With Access Door
 Finish: Anodized



Shaft
 TOP Diameter: 3"
 Bottom Diameter: 5"
 Thickness: 0.125"
 Material: AL6063
 With Base Plate, Base Cover,
 Finish: Powder Coating

Finish Options



Satin Brushed Finish -Satin Brushed



Anodized Colors - Black



Anodized Colors - Dark Bronze



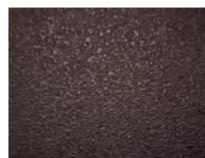
Anodized Colors - Medium Bronze



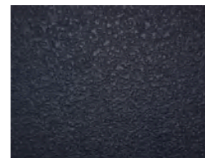
Anodized Colors - Light Bronze



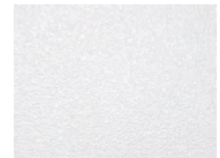
Anodized Colors - Clear Natural



Powder Coating Colors -Dark Bronze



Powder Coating Colors - Black



Powder Coating Colors-White

Looking for something that isn't here? Send us an email; we have a variety of options to suit your project needs.